



WIRE FREE TEMPERATURE MONITORING

REAL TIME DATA LOGGING

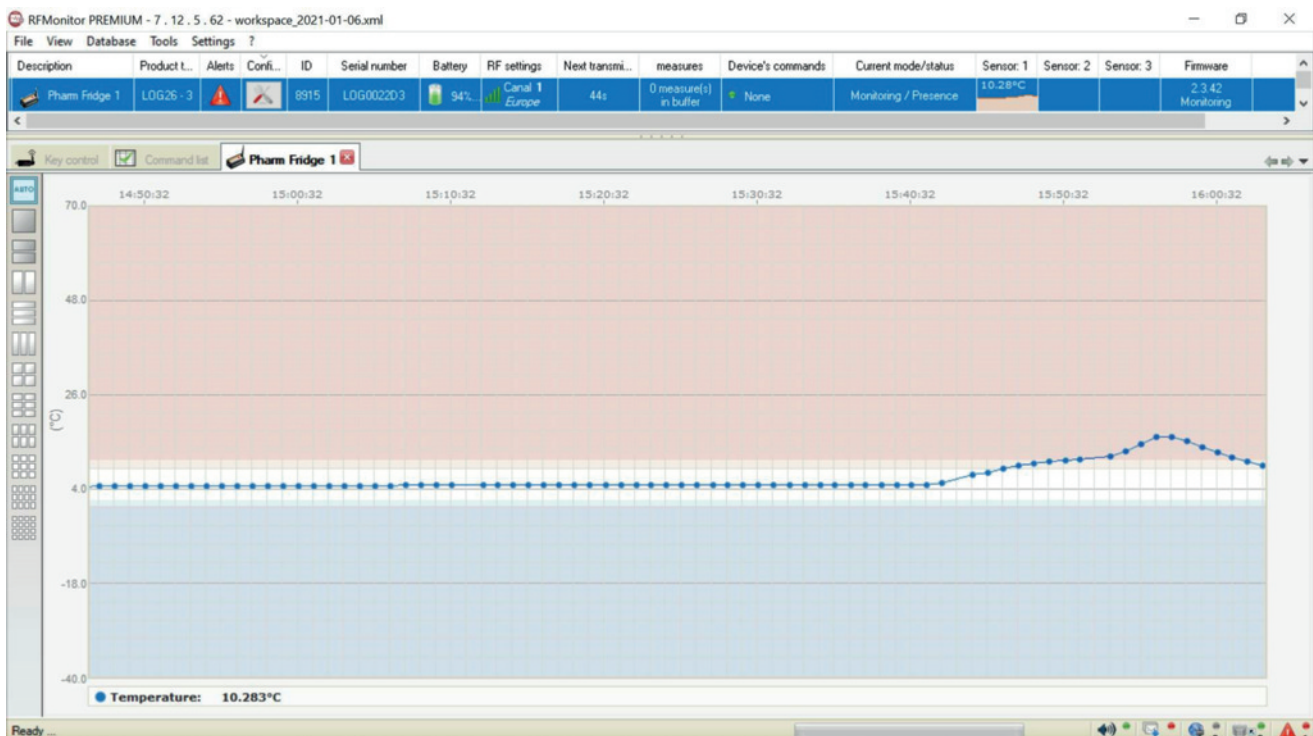
SIMPLE, ACCURATE, INEXPENSIVE.

Our wire free temperature monitoring system is so simple to install, set up and use that there is no need for any costly engineer visits. Packed with features including real time alerts, exportable data and simple to use monitoring software with temperature graphs, and probes for all temperature ranges.

Two systems are available, a single site system with can monitor hundreds of units in one site within a range of up to 900m from the base laptop/ PC, or a multi site cloud based system which can monitor units in several different sites and be operated from one central location.

- SIMPLE** - Self set up and install
- AFFORDABLE** - No costly engineer/ install costs
- HIGHLY ACCURATE** - Accurate to within +/- 0.5°C
- ADAPTABLE** - Easily add or remove dataloggers at any time
- REAL TIME** - Easily view real time temperature data on the supplied monitoring software

Both systems accommodate differing wireless dataloggers which can monitor temperatures anywhere between -250°C and +1100°C.



Contact us to discuss your requirements and specification or to request further information.

Office
info@qedscientific.com
01663 735494

LOM16 – Temperature data logger

Operating Temperature- -40°C to +70°C

Certification- EN12830

Accuracy- ± 0.3°C

Signal range- Up to 200 m

Data transfer- Radio

Sensor- Temperature, inside the casing

Compact design, watertight. Used in temperature-controlled storage. Monitoring pharmaceuticals and health products.



LOM56 – Temperature data logger

Operating Temperature- -40°C to +70°C

Accuracy- ± 0.3°C

Signal range- Up to 200m

Data transfer- Radio

Sensor- Temperature, inside the casing

Optimised design for an easy installation, well adapted to laboratories and refrigerated chambers



LOG86 – Temperature data logger

Operating Temperature- -40°C to +70°C

Accuracy- ± 0.3°C

Signal range- Up to 900m

Sensor- Temperature, inside the casing

Waterproof, 5 years autonomy



LGR33- Temperature data logger for PT1000

Operating Temperature- -250°C to +850°C (connected PT1000 probe)

Accuracy- ± 0.24°C (Out of probe)

Signal range- Up to 900 m

Sensors- PT1000 External temperature probe,

Temperature sensor, inside the casing

Ideal for using a PT1000

Cryogenic cold temperature measurement





Unit 21 Botany Business Park, Macclesfield Road,
Whaley Bridge, High Peak, SK23 7DQ

T:01663 735494
www.qedscientific.com
QED/LAB/TEMPMON/22.1